



Evans & Langford

Engineering *your* Environment

RB Group 

Engineering *the future*

Evans & Langford is part of the RB Group

- ◆ Structural & Civil Engineers
- ◆ Geo-Environmental Engineers
- ◆ Land & Building Surveyors
- ◆ Project Managers
- ◆ CDM Consultants
- ◆ Contract Administrators

From design and planning through to
project management and final delivery





- ◆ Structural & Civil Engineers
- ◆ Geo-Environmental Engineers

- ◆ Land & Building Surveyors
- ◆ Project Managers

- ◆ CDM Consultants
- ◆ Contract Administrators

Engineering *your* Environment

Evans & Langford encompasses three generations of knowledge and experience - established in Maidstone in 1963, our reach extended across London and the South East. After 60 years of trading as an independent partnership, we joined the RB Group in 2023, extending our area of operation to the north and west, into Wales and beyond the UK. We are now part of a multidisciplinary consultancy, still based in Kent, with a rich history of successful projects and a proud legacy of satisfied clients across the country and throughout Europe.

We aim to make your life easier, allowing you to concentrate on your day to day business, whilst enabling sustainable growth and prosperity in all commercial areas of operation, on green and brownfield sites. Our vast portfolio includes public and private sector infrastructure projects, new properties and

extensions, health, education, leisure, manufacturing, waste, heritage and refurbishment.

Our services include land and building surveying, ground investigation, drainage strategies and flood risk assessment. We can also offer project management, contract administration and programming services, financial cost advice, CDM consultancy and site supervision. Our sister company RB Plant provides a full range of Mechanical, Electrical and Process design services. Together, we offer a truly comprehensive service.

We can provide site planning, as well as design and build development support, liaison with UK agencies and relevant authorities, and can procure a wide range of specialist services through a network of trusted providers, enabling

compliance with Planning, Environmental, Building and Fire Safety regulations.

Together with RB Plant, we boast over 100 years of collective group experience across all areas of industrial activity, from mining and chemical processes, to paper and pulp, board manufacturing, waste management and electricity distribution. We will Engineer your Environment using the latest laser scanning, design and building information modelling techniques, ensuring our designs are both innovative and cost effective.

Let us take you on a seamless journey from your concept and outline ideas, through to final new building and completion. Together, we will Engineer the Future.



Evans & Langford
Engineering *your* Environment

Management Team

Our management team of highly experienced chartered engineers are involved in every project, from enquiry to completion, to ensure a consistently high standard of service to all clients.



Simon Robertson *DipEM BSc CEng MICE MIHT MCMI FConsE*

DIRECTOR

Key Responsibilities: Project Management, BIM & Contract Administration



Colin Shackelford *BEng CEng MICE IMaPS*

DIRECTOR

Key Responsibilities: Civil Engineering, Foundations & Geo-Environmental



Stuart Beardwell *BEng CEng MStructE*

DIRECTOR

Key Responsibilities: Structural Engineering, Land & Building Surveying



Daniel McLeish *DipMS BEng CEng MICE PGCE*

ASSOCIATE

Key Responsibilities: Highways, Infrastructure, Drainage & Flood Risk



Melanie Willetts *BSc FMAAT*

PRACTICE MANAGER

Key Responsibilities: Financial Administration, Computing & Human Resources

RB Group
Engineering the Future

- ◆ Process
- ◆ HVAC
- ◆ Control & Instrumentation
- ◆ Mechanical
- ◆ Electrical
- ◆ CDM

Evans & Langford are now part of the RB Group. RB Plant provide Process, Mechanical, Civil and Structural, HVAC, CDM, Electrical, Control and Instrumentation consultancy, design, project management, and construction support services across a wide range of sectors from Pharmaceuticals to Heavy Engineering – applying vision, purpose, and cutting-edge expertise.



Simon Denniss *BEng CEng MIMechE ACIL*

MANAGING DIRECTOR

Key Responsibilities: Mechanical Engineering, Electrical & Process Design



Sean McKirdy *BEng MSc CEng FIMechE*

DIRECTOR

Key Responsibilities: Mechanical Engineering



Mike Wolfe *BTech HNC MIET*

DIRECTOR

Key Responsibilities: Electrical Engineering, Controls & Instrumentation



Jon Horne *BEng CEng MChemE*

DIRECTOR

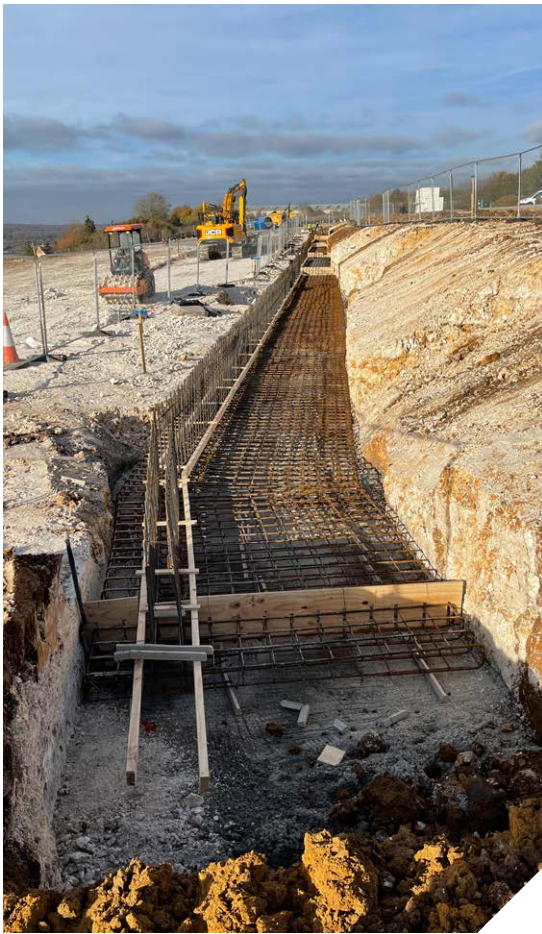
Key Responsibilities: Chemical & Process Engineering



Genghis Perriman *MEng CEng MChemE*

BUSINESS DEVELOPMENT MANAGER

Key Responsibilities: Process Engineering, Business Development



Structural & Civil Engineers

We work in multi-disciplinary project teams, with experts in all areas of the built environment, to provide clients with completed projects that not only meet their brief but do so in a cost effective manner and with minimal impact on their environment.

- ◆ Pre-purchase site appraisals and feasibility studies
- ◆ Structural investigations/inspections and condition reports
- ◆ Flood risk assessments
- ◆ Drainage strategies and detailed design
- ◆ Bridges, roads, rail & pavement design
- ◆ Foundation & superstructure design
- ◆ Retaining wall, piling and crane supports
- ◆ Pre-tender budget estimates
- ◆ Site Supervision and validation of building construction.



Geo-Environmental Engineers

Proper characterisation of ground conditions beneath your development site is crucial, to provide information for design, and to ensure ground related risks are identified, quantified, and adequately mitigated before construction starts.

Previous land use has left a legacy of contamination on many sites. Such contamination must be identified in order to assess the risk during construction and to the eventual occupiers of the site.

Evans & Langford can offer clients a full range of Geo-Environmental services, including:

- ◆ Desk Study (Phase 1 Assessment) – These can identify potential contamination and geotechnical risks before intrusive investigation takes place
- ◆ Intrusive investigation and in-situ testing using a range of techniques appropriate for the site, the nature of the proposed development, and the anticipated ground conditions
- ◆ Geotechnical and analytical testing through long standing relationships with specialist testing laboratories
- ◆ Provision of clear and detailed reports.
- ◆ Geotechnical analysis and design
- ◆ Advice on and design of temporary works including excavation support and working platforms
- ◆ Liaison with Planning Authorities, the Environment Agency, and other regulators.

Land & Building Surveyors

Our highly experienced survey team use modern land surveying equipment and software to provide survey solutions of the highest standard. We can provide:

- ◆ Traditional topographical surveys
- ◆ Unmanned Aerial Vehicle (drone) surveys piloted by our fully qualified and licensed personnel
- ◆ Laser scanning and BIM modelling
- ◆ Detailed site plans & area/volume calculations
- ◆ Conveyance plans, boundary surveys & expert witness reports
- ◆ Terrain models for contour plans and Flood Risk Assessment
- ◆ Dimensional analysis & as-built surveys
- ◆ Monitoring of buildings, roads & other structures
- ◆ Setting-out & baseline establishment
- ◆ Subterranean drainage and buried utility surveys.





Project Managers

Managing the progression of any project, from inception to completion, requires wide knowledge and deep understanding of the construction sector.

We can deal with all matters from the very outset of your project, whether you have developed a conceptual design or need assistance to confirm the scope of the project. This applies whether the project involves a new standalone building or the extension/refurbishment of existing premises, on green or brownfield sites.

Our role is to make your life easier, by engineering your environment for future expansion, enabling growth and the establishment of brand new facilities in any sectors, across all parts of the country by undertaking:

- ◆ Project cost control
- ◆ Cashflow projections
- ◆ Programme Assessment
- ◆ Monitoring progress and working to mitigate any delays.



Contract Administrators

Evans & Langford can assist with the implementation of your project.

Our services include the preparation of:

- ◆ Contract Documents
- ◆ Bills of Quantities
- ◆ Schedules of Work
- ◆ Contract Specifications.

We can administer the tender process in full, dealing with any queries that arise and attending site meetings as required. Following receipt of tenders, we will carefully review them for completeness and accuracy, also prepare a detailed tender report.

Once a contractor has been awarded the contract, we can supervise and administer the project from start to finish, including:

- ◆ Resident Engineer provision
- ◆ Issuing site instructions
- ◆ Assessment of variations, valuations, and claims
- ◆ Certification of completion
- ◆ Defects correction
- ◆ Site construction supervision.

CDM Consultants

The organisation is fully conversant with all aspects of the Construction (Design & Management) Regulations 2015 which provide a framework within which the Health and Safety aspects of construction work must be managed.

These regulations impose legal duties on Clients, Designers and Contractors, and the 2015 updates introduced the role of Principal Designer. Evans & Langford are able to advise on Principal Designer role and can also provide full details and guidance to all duty holders, as CDM consultants.

Evans & Langford concentrate on close working with the design team to identify and minimise any significant hazards associated with the project, without creating unnecessary and bureaucratic procedures that can reduce the real effectiveness of the regulations.

The introduction of the Building Safety Act also imposes new duties and additional role requirements which we can provide advice on and assist with.



Commercial

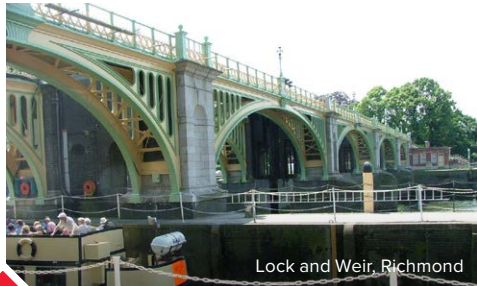


Community



Sector expertise

Heritage



Industrial



Infrastructure



Little Cheyne Court Wind Farm, Romney Marsh



M1 Junction 15a Jacked-Box tunnel



Western Docks Revival, Dover

Leisure



Dreamland, Margate



The Schools at Somerhill



Leisure Centre Access, Dover



Glaxo Bridge, Ware

Sector expertise

Residential



RBLI Veterans' Apartments, Aylesford



Waterfall Cottage, Patixbourne



Bridge Point, Rye

Retail



Co-op, Broadstairs



Dunelm, Westwood Retail Park



Tapi Carpets, Broadstairs

Contact Details



Evans & Langford
Engineering your Environment

Evans & Langford Consultants Ltd

t. +44 (0)1622 690120

e. mail@evanslangford.co.uk

evanslangford.co.uk

RB Plant Construction Ltd

t. +44 (0)1622 858387

e. mail@rb-plant.co.uk

rbplant.com

RB House, The Square, Lenham
Maidstone, Kent, ME17 2PG

Simon Robertson *DipEM BSc CEng MICE MIHT MCMi FConsE*

DIRECTOR

e. simon.robertson@evanslangford.co.uk

t. +44 (0)1622 621977 **m.** +44 (0)7979 591805

Colin Shackelford *BEng CEng MICE IMaPS*

DIRECTOR

e. colin.shackelford@evanslangford.co.uk

t. +44 (0)1622 621978 **m.** +44 (0)7825 397770

Stuart Beardwell *BEng CEng MIStructE*

DIRECTOR

e. stuart.beardwell@evanslangford.co.uk

t. +44 (0)1622 621998 **m.** +44 (0)7564 052276

Daniel McLeish *DipMS BEng CEng MICE PGCE*

ASSOCIATE

e. daniel.mcleish@evanslangford.co.uk

t. +44 (0)1622 621974 **m.** +44 (0)7909 992966

Melanie Willetts *BSc FMAAT*

PRACTICE MANAGER

e. melanie.willetts@evanslangford.co.uk

t. +44 (0)1622 621973

RB Group

Engineering the future

Evans & Langford is part of the RB Group

Simon Dennis *BEng CEng MIMechE ACIL*

MANAGING DIRECTOR

e. simon-d@rb-plant.co.uk

t. +44 (0)1622 532210 **m.** +44 (0)7715 758154

Sean McKirdy *BEng MSc CEng FIMechE*

DIRECTOR

e. sean-m@rb-plant.co.uk

t. +44 (0)1622 532230 **m.** +44 (0)7715 758159

Mike Wolfe *BTech HNC MIET*

DIRECTOR

e. mike-w@rb-plant.co.uk

t. +44 (0)1622 532214 **m.** +44 (0)7715 758152

Jon Horne *BEng CEng MIChemE*

DIRECTOR

e. jon-h@rb-plant.co.uk

t. +44 (0)1622 532224 **m.** +44 (0)7715 758156

Genghis Perriman *MEng CEng MIChemE*

BUSINESS DEVELOPMENT MANAGER

e. genghis-p@rb-plant.co.uk

t. +44 (0)7715 758161

